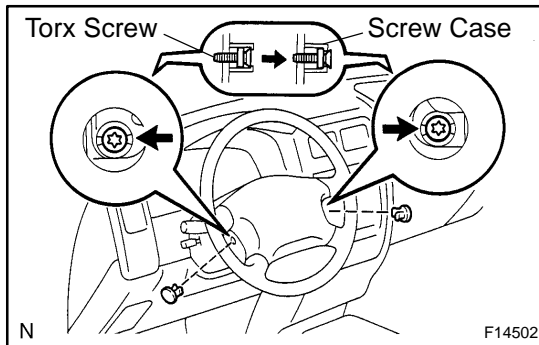


## REMOVAL

### 1. REMOVE STEERING WHEEL PAD

#### NOTICE:

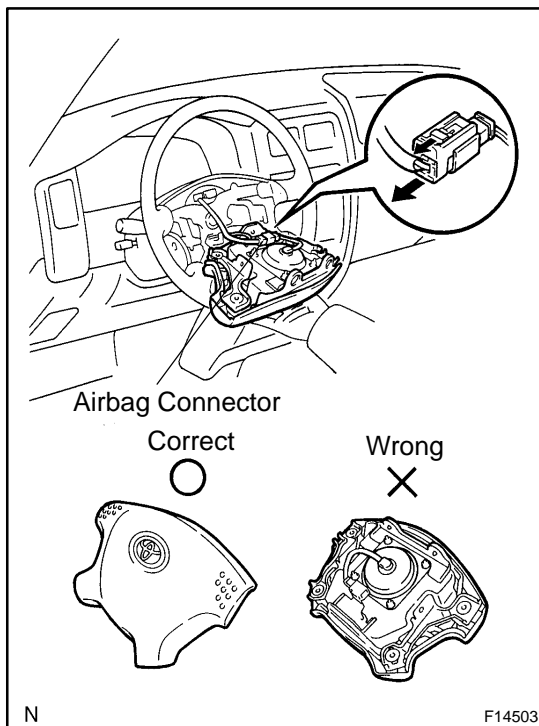
- If the airbag connector is disconnected with the ignition switch at ON or ACC, DTCs will be recorded.
- Never use airbag parts from another vehicle. When replacing parts, replace with new ones.



- Place the front wheels facing straight ahead.
- Remove the 2 steering wheel lower No.2 covers.
- Using a torx socket wrench, loosen the 2 torx screws.

#### HINT:

Loosen the screw until the groove along the screw circumference catches on the screw case.



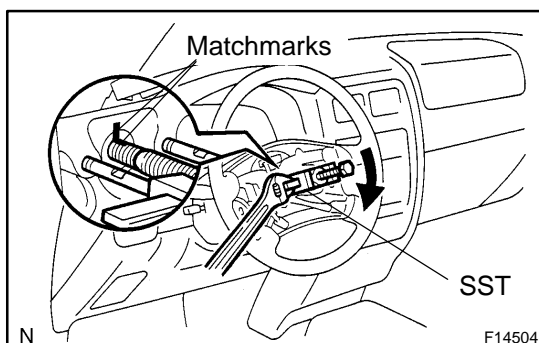
- Pull out the wheel pad from the steering wheel and disconnect the airbag connector.

#### CAUTION:

- When storing the wheel pad, keep the upper surface of the pad facing upward.
- Never disassemble the wheel pad.

#### NOTICE:

When removing the wheel pad, take care not to pull the airbag wire harness.



### 2. REMOVE STEERING WHEEL

- Disconnect the connector.
- Remove the steering wheel set nut.
- Place matchmarks on the steering wheel and main shaft assembly.
- Using SST, remove the wheel.

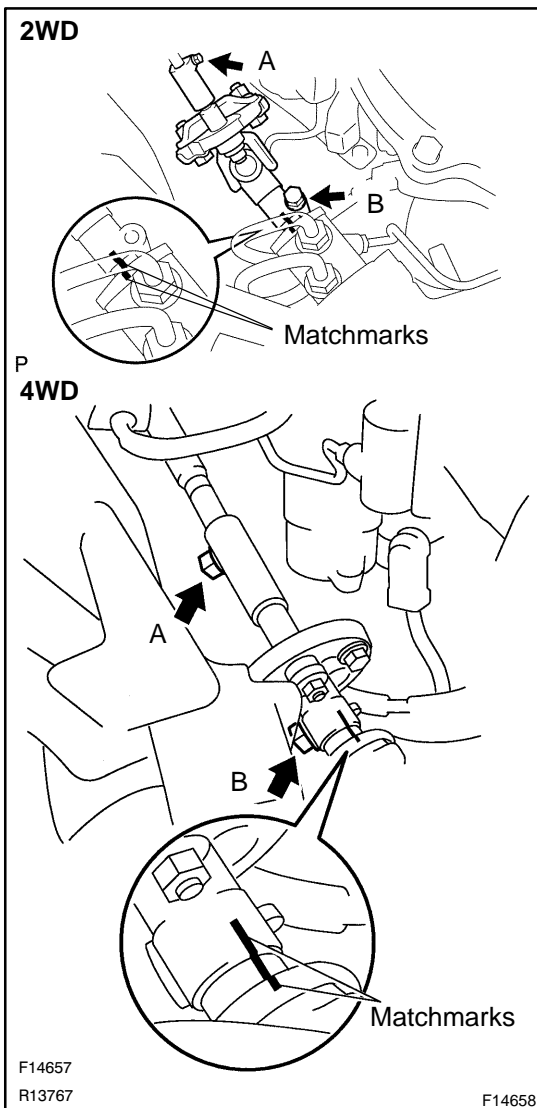
SST 09950-50013 (09951-05010, 09952-05010, 09953-05010, 09954-05021)

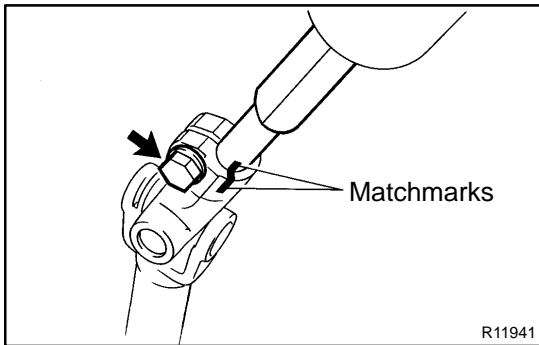
- 3. REMOVE UPPER AND LOWER COLUMN COVERS**  
Remove the 3 screws, upper and lower column covers.
- 4. REMOVE LOWER LH FINISH PANEL**
  - (a) Remove the 2 screws and disconnect the hood lock release lever from the panel.
  - (b) Remove the 4 panel set bolts, screw and lower LH finish panel.
- 5. REMOVE NO. 2 HEATER TO REGISTER DUCT**  
Remove the screw and No.2 heater to register duct.
- 6. REMOVE COMBINATION SWITCH WITH SPIRAL CABLE**
  - (a) Disconnect the 3 connectors.
  - (b) Disconnect the airbag connector.
  - (c) Remove the 3 screws and combination switch with the spiral cable.
- 7. REMOVE SPIRAL CABLE (See page BE-16)**

**NOTICE:**

Do not disassemble the cable or apply oil to it.

- 8. DISCONNECT JUNCTION BLOCK NO.1**  
Remove the 2 bolts and disconnect the junction block No.1.
- 9. DISCONNECT INTERMEDIATE NO.2 SHAFT**
  - (a) Place matchmarks on the intermediate No.2 shaft and control valve shaft.
  - (b) Loosen the bolt A and remove the bolt B.
  - (c) disconnect the intermediate No.2 shaft from the control valve shaft.
- 10. REMOVE INTERMEDIATE NO.2 SHAFT**  
Remove the bolt A and intermediate No.2 shaft.
- 11. 4WD:  
REMOVE COLUMN HOLE COVER AND COLUMN HOLE COVER NO.2 SET BOLTS**  
Remove the 5 bolts and column hole cover.
- 12. REMOVE STEERING COLUMN ASSEMBLY**
  - (a) Disconnect the connectors.
  - (b) Remove the 2 column assembly set bolts and nuts.



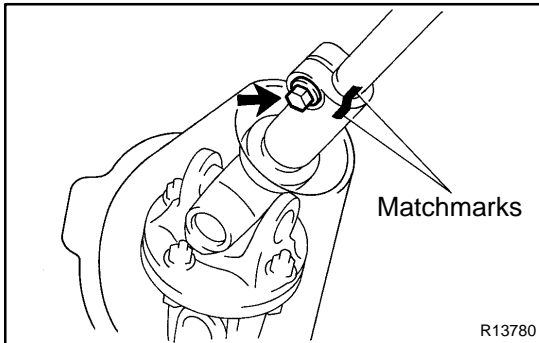


**13. 2WD:  
REMOVE UNIVERSAL JOINT NO.2 AND COLUMN  
HOLE COVER**

- (a) Remove the 5 column hole cover installation bolts.
- (b) Place matchmarks on the universal joint No.2 and main shaft assembly.
- (c) Remove the bolt ,universal joint No.2 and column hole cover.

**NOTICE:**

**Be careful not to damage the hole cover dust seal.**



**14. 4WD:  
REMOVE UNIVERSAL JOINT NO.2**

- (a) Place matchmarks on the universal joint No.2 and main shaft assembly.
- (b) Remove the bolt and universal joint No.2 .

**15. 4WD:  
REMOVE COLUMN HOLE COVER NO.2**

Remove the column hole cover No.2 from the universal joint No.2.